



CLEMCO
The Performance
System

TECHNICAL DATA SHEET

Note: For safe, efficient blasting, read and follow the owner's manual and seek training for everyone who will use this equipment.

Purpose

The Apollo 20 LP is designed for use with an ambient air pump. It meets OSHA standards for respiratory protection and noise limitations. The Apollo 20's full-helmet design and heavy-duty cape protect the blast operator's head, neck, shoulders, and chest from rebounding abrasive.

Requirements for Operation

The following items are required or recommended for operation, but are not included with this respirator:

- An ambient air pump that is NIOSH approved for use with respirators, capable of delivering 7 to 15 cfm of air at 8 to 12 psi
- 1/2-inch x 50-foot respirator hose from the ambient air pump to the helmet connection
- Protective clothing, gloves, and shoes suitable for a heavy construction site
- Primary hearing and eye protection
- Output from the ambient air pump must meet the standard for Grade D breathing air, as defined by the Compressed Gas Association, Commodity Specification: G-7.1 (www.cganet.com)

Description of Operation

The Apollo 20 includes a single-shell construction helmet supported by an adjustable suspension. The operator adjusts the suspension to fit, then installs it in the helmet. A chin strap holds the helmet firmly in place. The rectangular window provides a clear field of view. An inner fixed lens and one middle lens seal out dust and abrasive.

Up to three lightweight, disposable outer lenses, held in place by a hinged frame, protect the middle lens from pitting. As the outermost disposable lens becomes pitted, it can be torn off to expose the next lens.

Description

The Apollo 20 LP is a Type CE, continuous flow, supplied-air respirator with Constant-Flow Connector for abrasive blasting, to be used with an ambient air pump. The high visibility red single-shell helmet has a box-front window, and a protective cape.



The Apollo 20 LP comes with a Constant-Flow Connector that provides a fixed flow of air.

A flexible breathing tube between the Constant-Flow Connector and the helmet allows free movement of the operator's head. This tube contains specially formulated sound-deadening materials that help the respirator comply with 80 dBA maximum noise level while allowing free air flow. For maximum protection while blasting, the operator must wear ear plugs or other suitable hearing protection and safety glasses or goggles.

The air enters the helmet at the rear, travels through a sound-attenuating distribution system at the top, and circulates about the operator's face. The incoming air maintains slightly positive pressure inside the helmet, so exhaled air exits via the knit collar. Maintaining positive pressure inside the helmet helps keep out the potentially harmful dust and abrasive.

Apollo 20 LP Supplied-Air Respirator

Stock No. 21299, 21423

Advantages

- Requires no compressor, breathing air filter, or CO monitor
- Box-front window features economical replacement lenses
- Sound-attenuating, air-distribution channel
- Lightweight construction
- Molded-in carrying handle
- Allows operator to wear supplementary hearing and primary eye protection

Approvals and Certifications

The Apollo 20 LP helmet is a NIOSH-approved type CE respirator (approval number TC-19C-339) and is recognized by OSHA as having an assigned protection factor (APF) against lead dust of 1000 times the permissible exposure limit (PEL).

NOTE: Prior to use, ensure that the Apollo, type CE, supplied-air respirator is appropriate for your specific blasting conditions and requirements.

Related Clemco Literature

Description	Stock No.
Contractor Series Catalog	21385
Abrasive Blasting Safety Practices	22090
Blast Off 2	09294
Operator Safety Equipment Product Study	07764
Apollo 20 LP Owner's Manual	21991

Options and Accessories

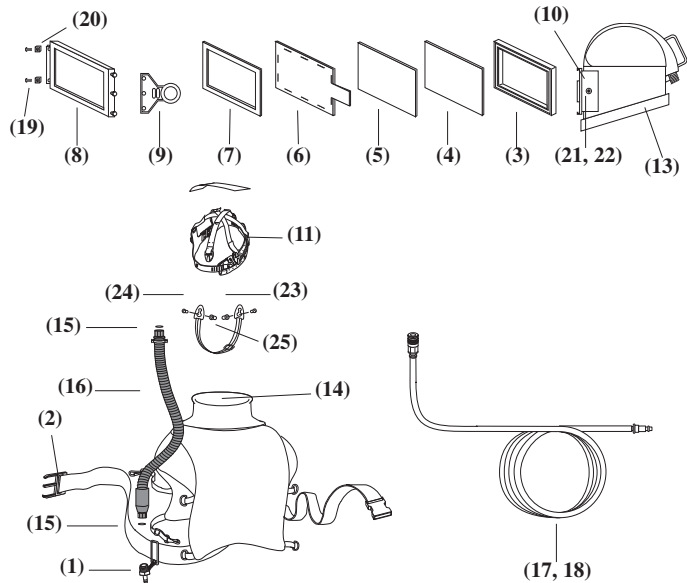
Heavy-duty blast suit (leather front, cotton back)						
S	M	L	XL	XXL	XXXL	
08920	08921	08922	08923	24201	24202	
Light-weight seasonal blast suit (nylon front, cotton back)						
S	M	L	XL	XXL	XXXL	
22913	22914	22915	22916	22917	25022	
Leather gloves						02243

Respirator Systems and Accessories

Item	Description	Stock No.
(-)	Apollo 20 LP, w/Constant-Flow Connector, without respirator hose.....	21299
(-)	Apollo 20 LP, w/Constant-Flow Connector and 1/2" x 50' respirator hose	21423
(-)	High pressure conversion kit. Converts LP helmet to HP helmet.....	22690

Replacement Parts

Item	Description	Stock No.
1.	Constant-Flow Connector, LP, without belt	21429
2.	Belt	04430
3.	Gasket, molded window	99996
4.	Inner lens, 4-5/8" x 6-5/8", package of 5	21409
5.	Middle lens, 5" x 7", package of 5	21410
6.	Cover lens, perforated, package of 25	21411
7.	Gasket, lens frame	21041
8.	Lens frame	20976
9.	Latch, lens frame, rubber.....	21298



10.	Button, rubber latch	21040
11.	Suspension	10532
12.	Air channel partition kit (not shown)	21118
13.	Cape attachment strap	10534
14.	Cape with inner collar, black.....	21301
15.	O-ring, 11/16" ID x 7/8" OD, 2 required	22815
16.	Breathing tube w/swivel ends	22811
17.	Respirator hose, 1/2" x 100'	21413
18.	Respirator hose, 1/2" x 50'	22510
19.	Nut, lens frame, 2 required	90041
20.	Screw, lens frame, 2 required	90295
21.	Screw, 8-32 x 1/2"	21402
22.	Screw, 8-32 x 1"	21403
23.	Chin strap holder, 2 required.....	21696
24.	Screw, 8-32 x 1/2" ph hd, 2 required	21119
25.	Chin strap.....	04460

Packaging

Respirator

Stock No.	Dimensions	Weight
21299	13-1/2" x 13" x 11"	8.1 lb

Respirator Hose (Bagged)

Stock No.	Dimensions	Weight
22510	Approximate 17-1/2" x 17 1/2" x 4"	11 lb
21413	Approximate 17-1/2" x 17 1/2" x 6"	22 lb

Authorized Distributor:

ISO 9001-2000 certified. Clemco is committed to continuous product improvement. Specifications are subject to change without notice.

© 2007 Clemco Industries Corp. • One Cable Car Drive • Washington, MO 63090 • Phone (636) 239-4300 • Fax (636) 239-0788

Stock No. 21960

www.clemcoindustries.com

Job No. 1195-1295 • Date of Issue: 06/98, Rev. D; 10/07